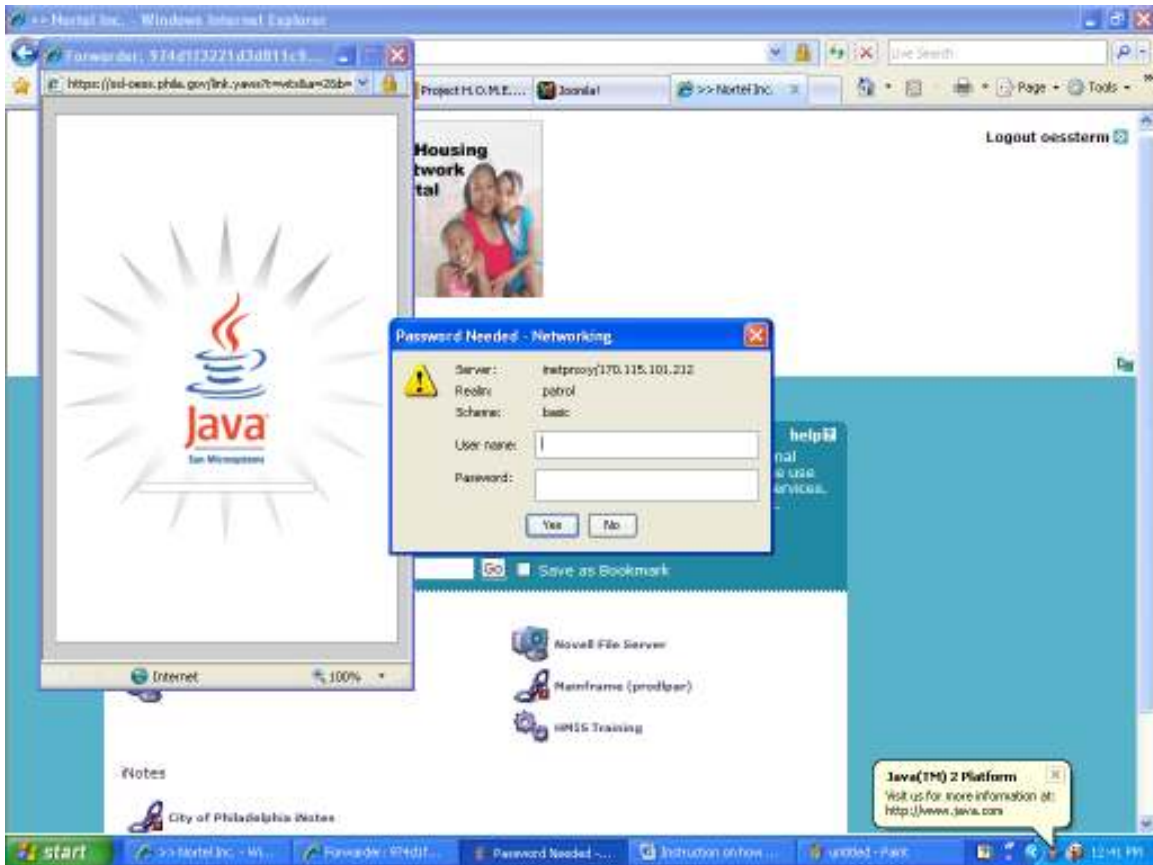


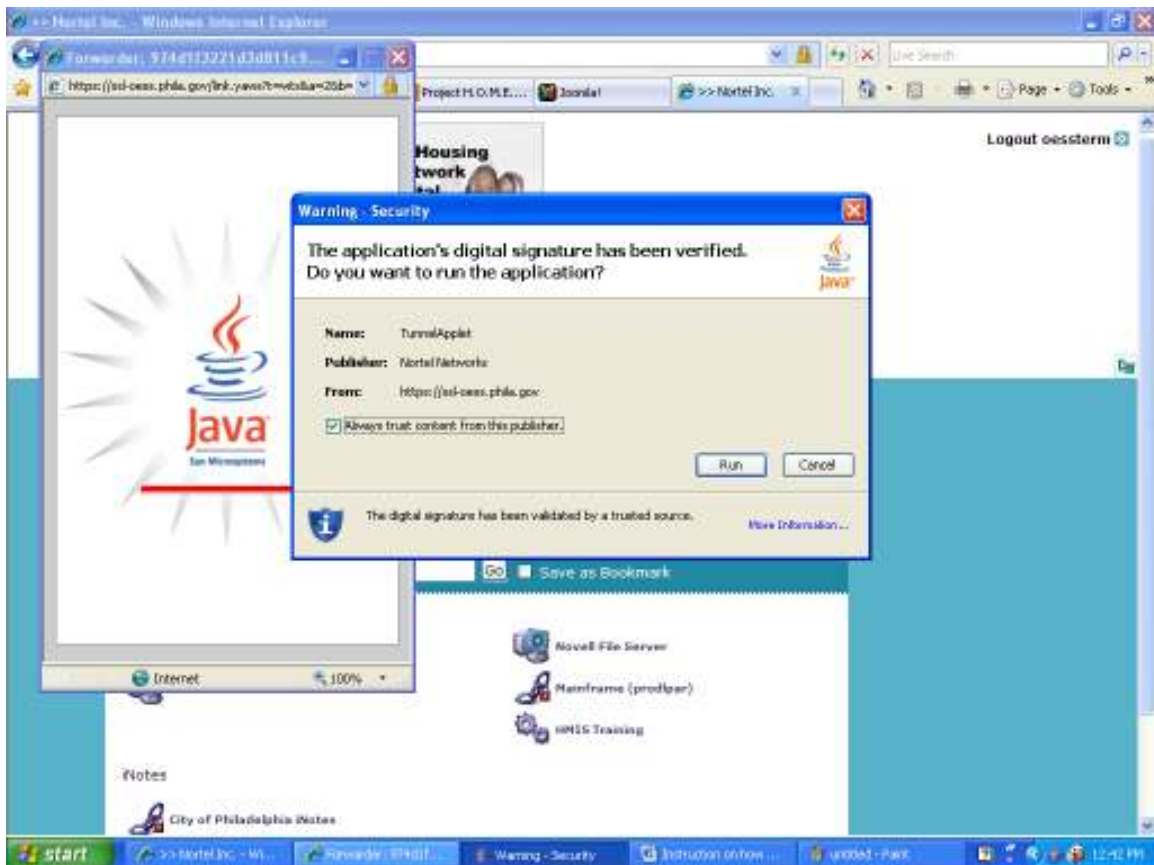
Instructions on how to log into HMIS Application via Internet or Terminal Services (Part Two)



If you get “Password Needed – Networking” Dialog Box, then have your IT Staff assign you a Username and Password.

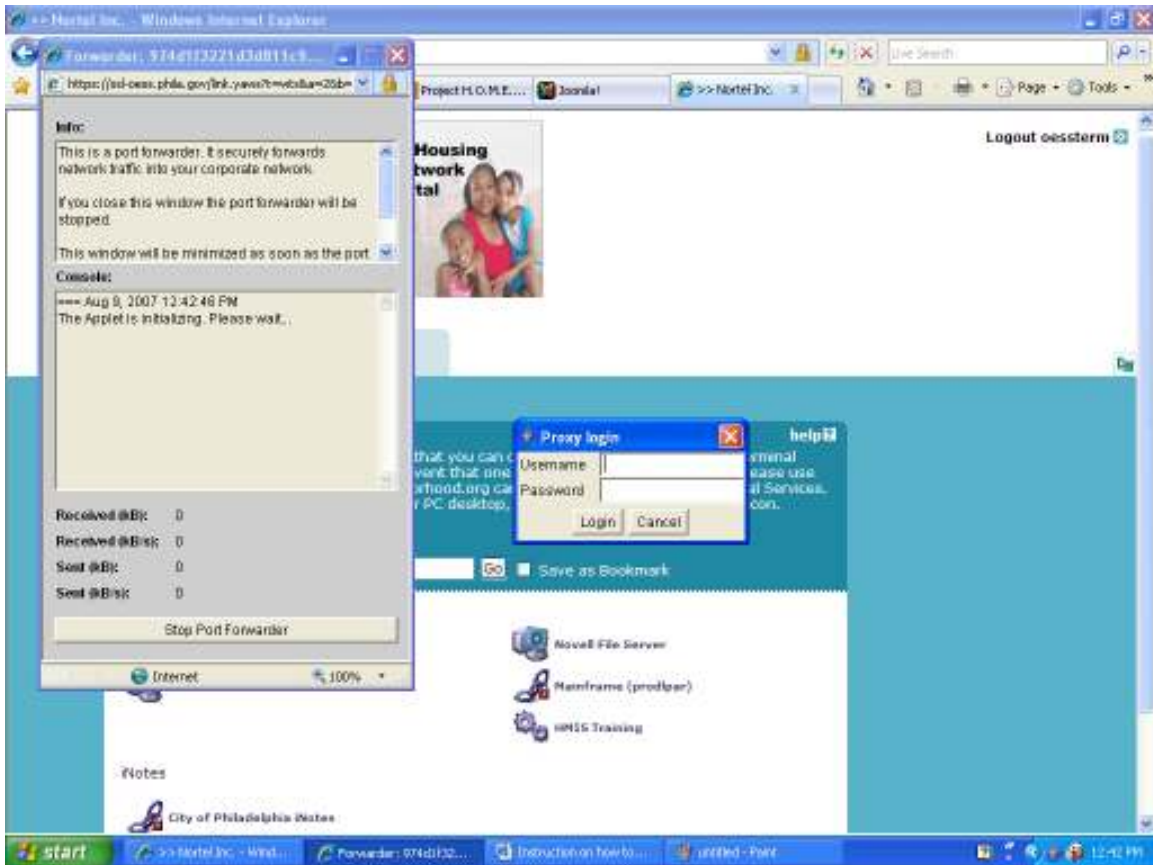
If you don't get a Dialog Box, you will be directed to Windows Server 2003 Dialog Box, which is shown on page 5 .

Instructions on how to log into HMIS Application via Internet or Terminal Services (Part Two)



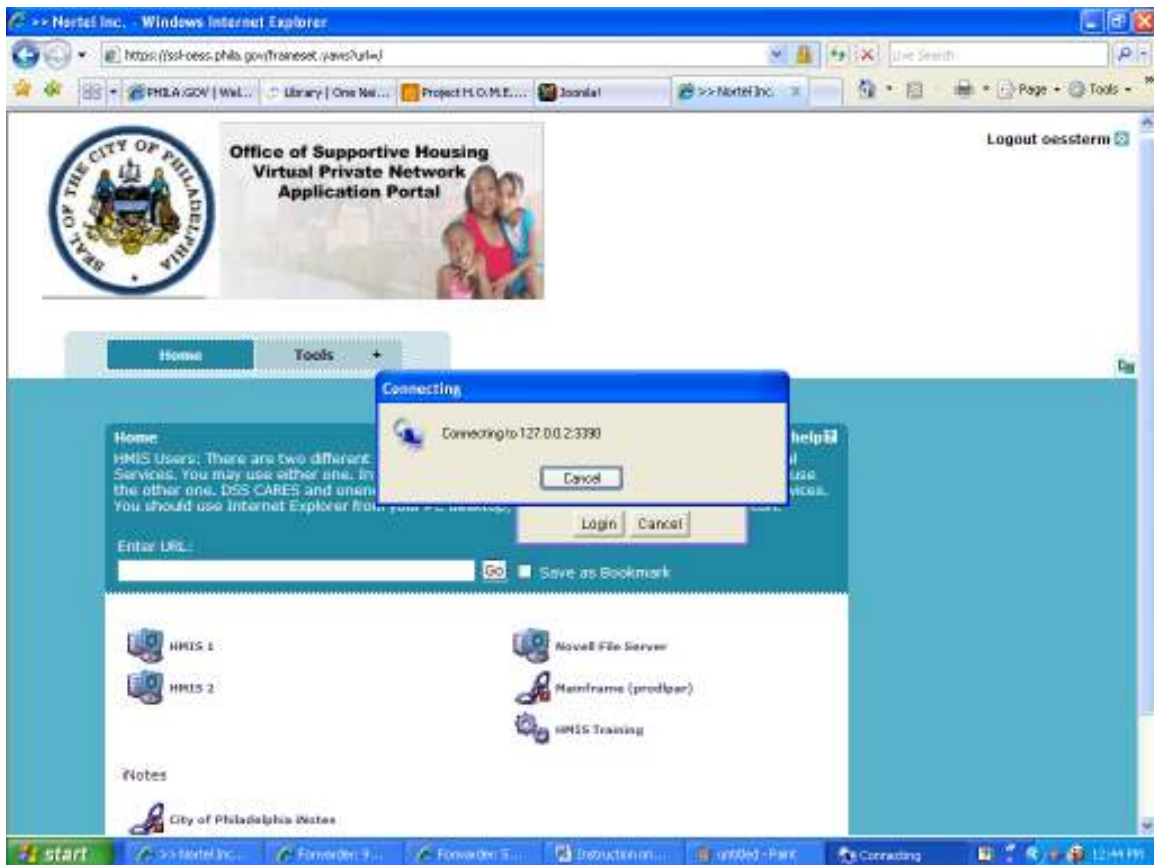
The “Warning - Security” Dialog Box will only show once unless IT Staff does an update on your Network System.

Instructions on how to log into HMIS Application via Internet or Terminal Services (Part Two)



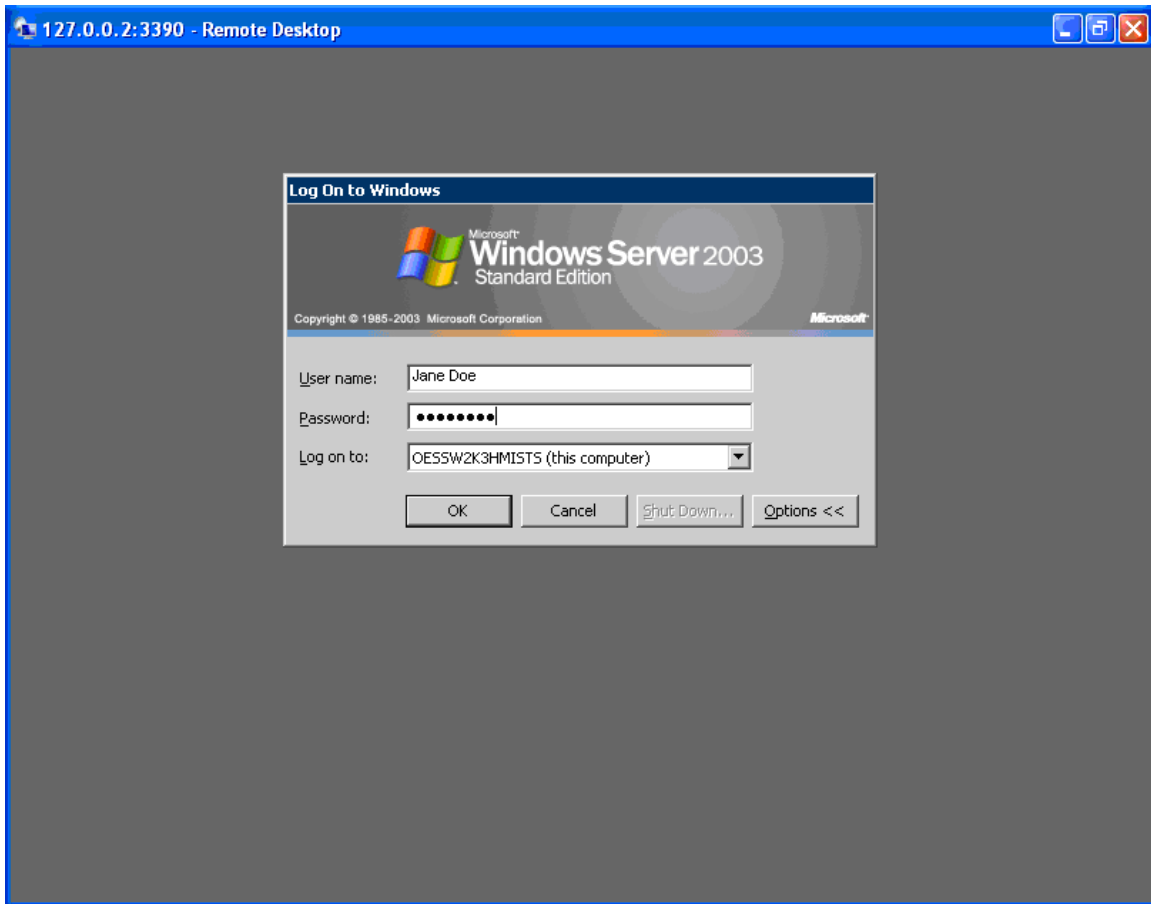
Sometime your “Firewall” will require you the user to log in twice. If you do not have a “Firewall” you will proceed to Windows Server 2003 Dialog Box on page 5 after clicking on HMIS 1 or HMIS 2.

Instructions on how to log into HMIS Application via Internet or Terminal Services (Part Two)



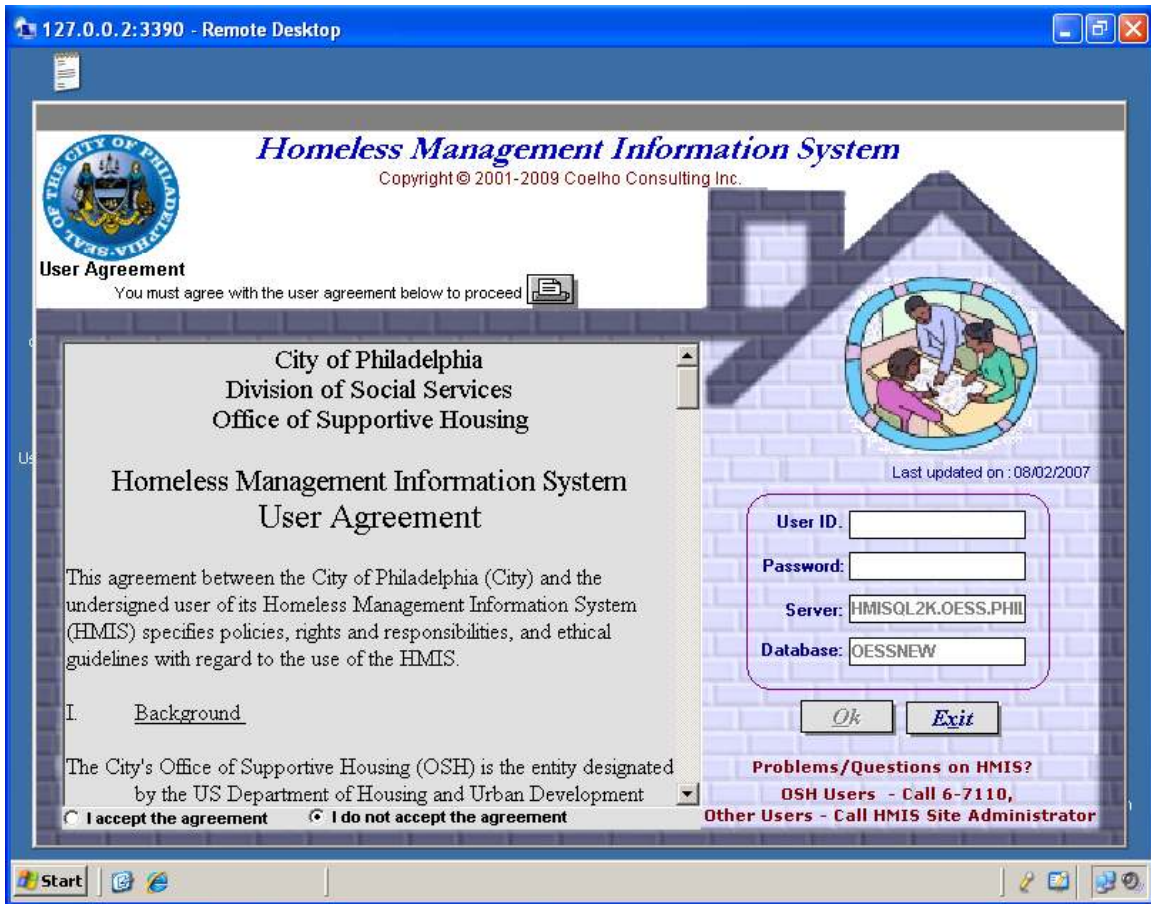
The “Connecting” Dialog Box should now appear to let you know that you are connecting to the HMIS System.

Instructions on how to log into HMIS Application via Internet or Terminal Services (Part Two)



You will type in your assigned HMIS id in the Username section and the Password section then click the “OK” button.

Instructions on how to log into HMIS Application via Internet or Terminal Services
(Part Two)



You must check off the “I accept the agreement” radio button before you can type in your assigned HMIS User ID in the User ID section. Then you type in your assigned **temporary** HMIS default Password.